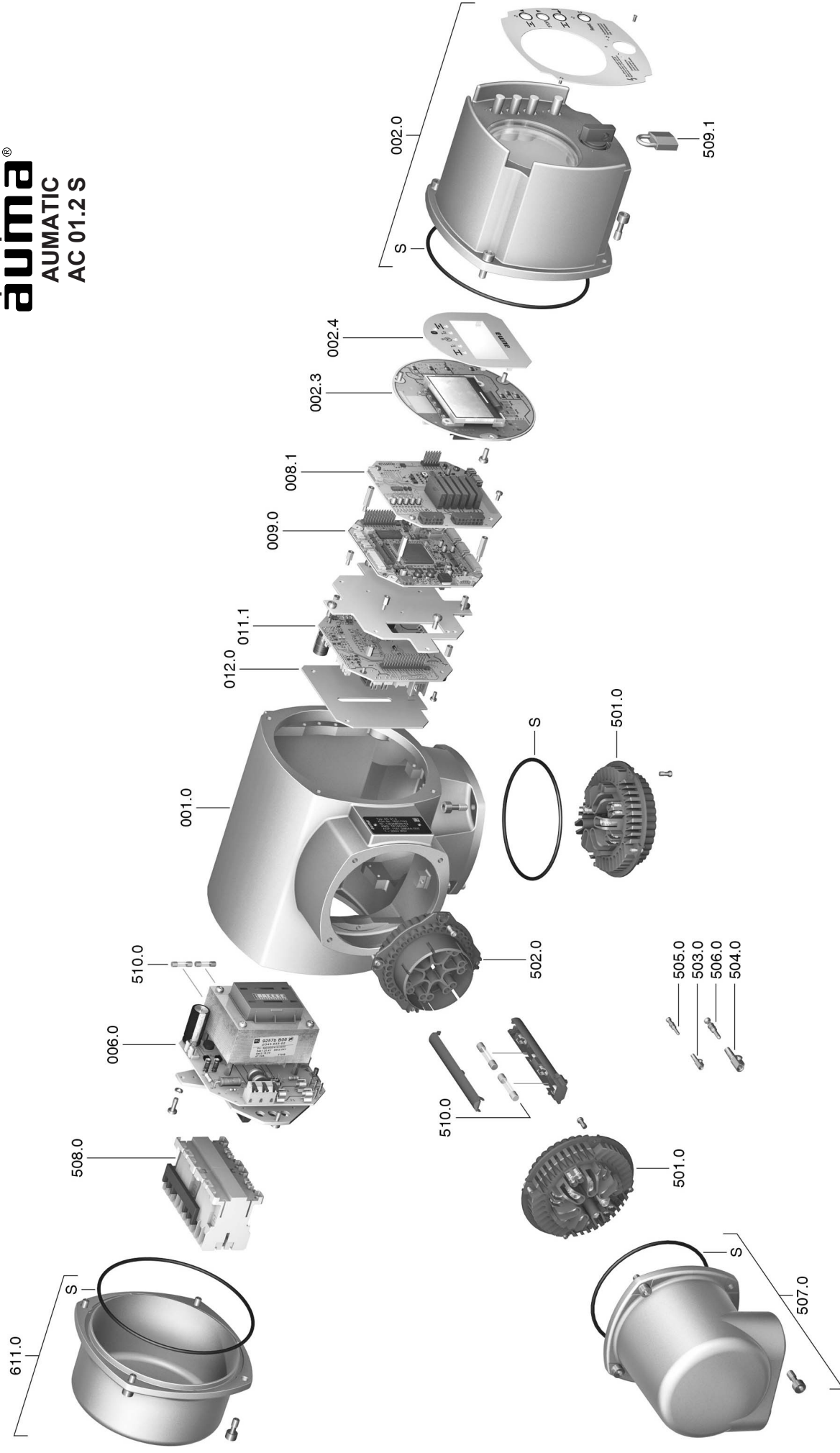


Spare parts list  
**ama**<sup>®</sup>  
 AUMATIC  
 AC 01.2 S



**Spare parts list AUMATIC**

---

Please state device type and our order number (see name plate) when ordering spare parts. Only original AUMA spare parts should be used. Failure to use original spare parts voids the warranty and exempts AUMA from any liability. Representation of spare parts may slightly vary from actual delivery.

Ref. No.	Designation
001.0	Housing
002.0	Local controls
002.3	Local controls board
002.4	Face plate for display
006.0	Power supply unit
008.1	I/O board
009.0	Logic board
011.1	Relay board
012.0	Option board
501.0	Socket carrier (complete with sockets)
502.0	Pin carrier without pins
503.0	Socket for controls
504.0	Socket for motor
505.0	Pin for controls
506.0	Pin for motor
507.0	Cover for electrical connection
508.0	Switchgear
509.1	Padlock
510.0	Fuse kit
611.0	Cover
S	Seal kit