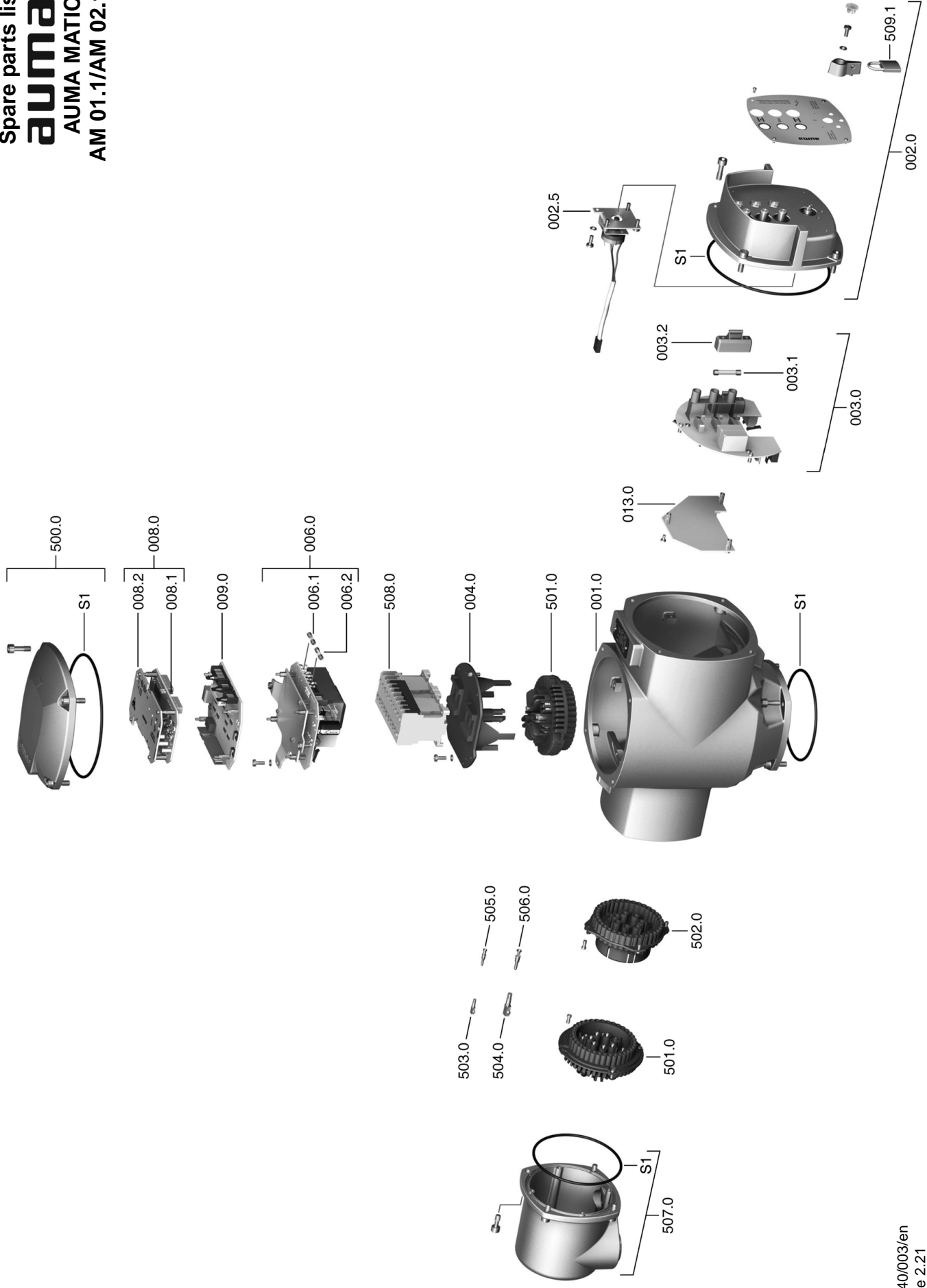


Spare parts list
auma[®]
 AUMA MATIC
 AM 01.1/AM 02.1 S



Spare parts list AUMA MATIC

Please state device type and our order number (see name plate) when ordering spare parts. Only original AUMA spare parts should be used. Failure to use original spare parts voids the warranty and exempts AUMA from any liability. Representation of spare parts may slightly vary from actual delivery.

Ref. no.	Designation	Type
001.0	Housing	
002.0	Local controls	Sub-assembly
002.5	Selector switch	Sub-assembly
003.0	Signal and control board	Sub-assembly
003.1	Primary fuse F1/F2	
003.2	Fuse cover	
004.0	Carrier for contactors	
006.0	Power supply unit	Sub-assembly
006.1	Secondary fuse F3	
006.2	Secondary fuse F4	
008.0	Interface board	Sub-assembly
008.1	Interface board	
008.2	Cover plate for interface board	
009.0	Logic board	Sub-assembly
013.0	Adapter board	Sub-assembly
500.0	Cover	Sub-assembly
501.0	Socket carrier (complete with sockets)	Sub-assembly
502.0	Pin carrier without pins	Sub-assembly
503.0	Socket for controls	Sub-assembly
504.0	Socket for motor	Sub-assembly
505.0	Pin for controls	Sub-assembly
506.0	Pin for motor	Sub-assembly
507.0	Cover for electrical connection	Sub-assembly
508.0	Switchgear	Sub-assembly
509.1	Padlock	
S	Seal kit	Set